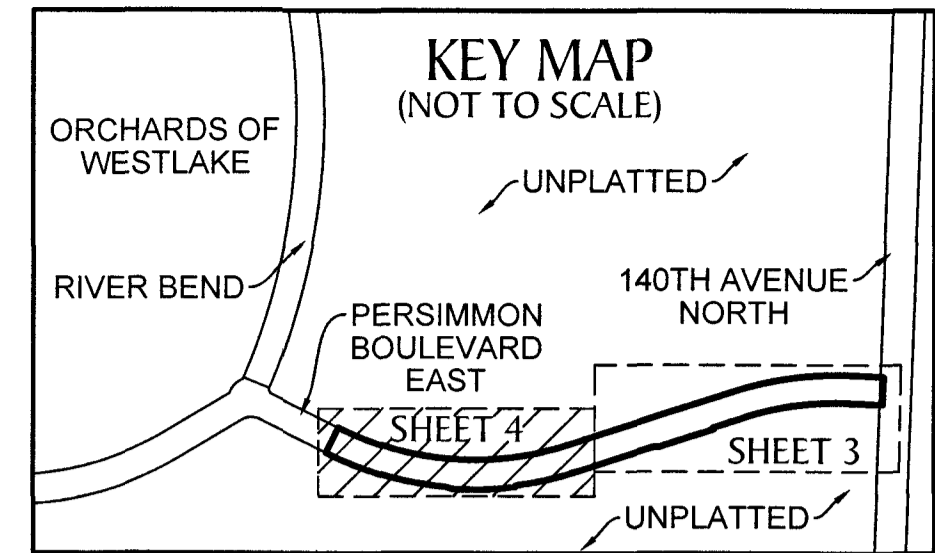
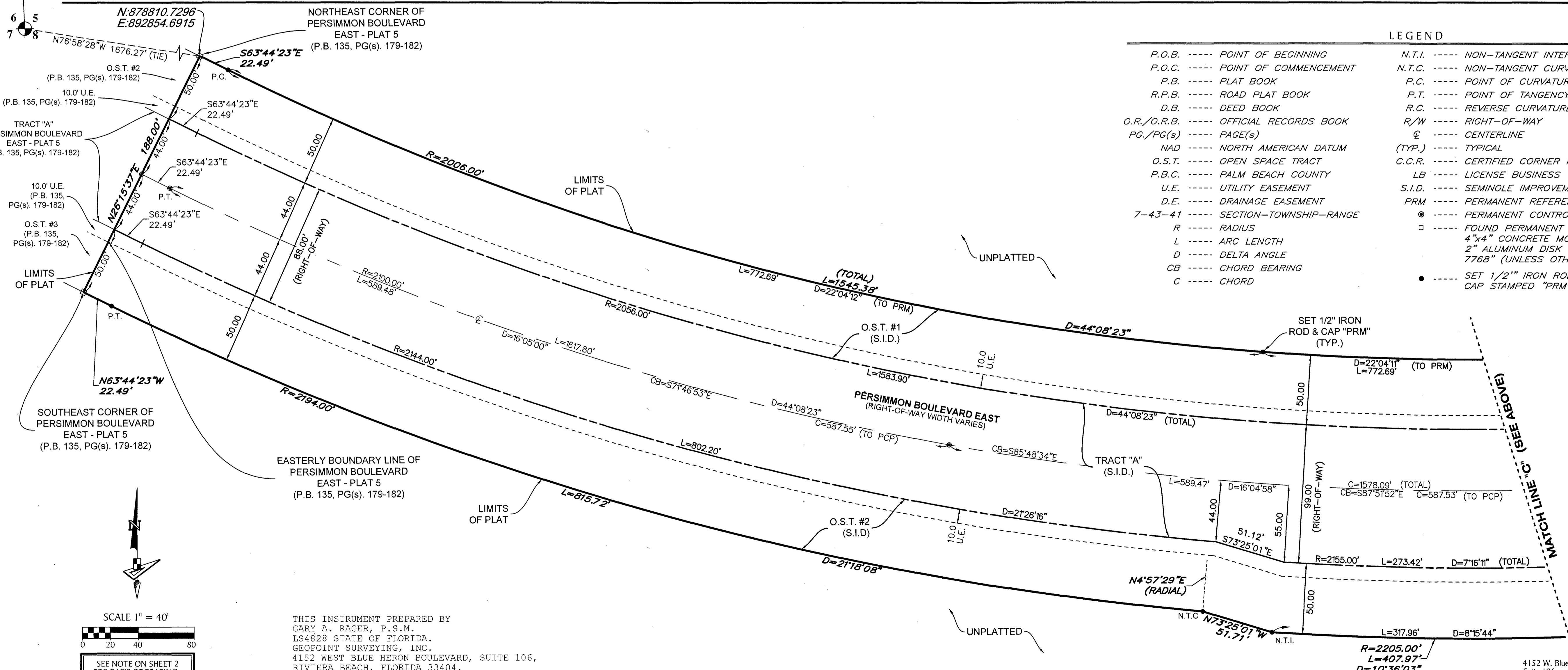
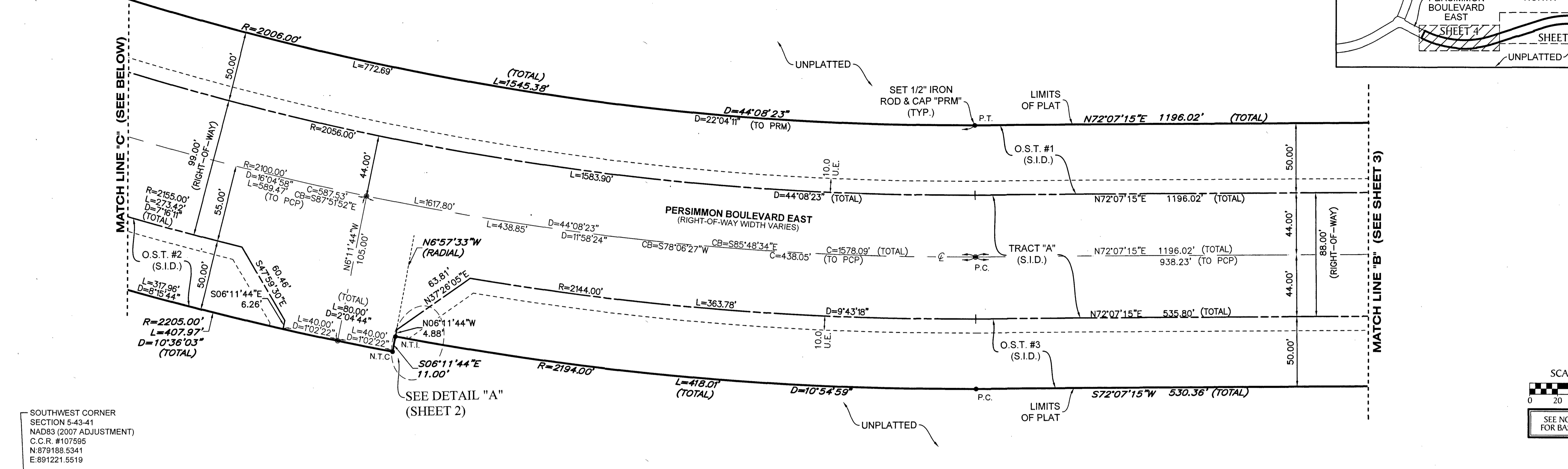


PERSIMMON BOULEVARD EAST - PLAT 6

BEING A PORTION OF SECTION 5, TOWNSHIP 43 SOUTH, RANGE 41 EAST,
AND SECTION 8, TOWNSHIP 43 SOUTH, RANGE 41 EAST
CITY OF WESTLAKE, PALM BEACH COUNTY, FLORIDA



186



| LEGEND | |
|-------------------|--|
| P.O.B. ----- | POINT OF BEGINNING |
| P.O.C. ----- | POINT OF COMMENCEMENT |
| P.B. ----- | PLAT BOOK |
| R.P.B. ----- | ROAD PLAT BOOK |
| D.B. ----- | DEED BOOK |
| O.R./O.R.B. ----- | OFFICIAL RECORDS BOOK |
| PG./PG(s) ----- | PAGE(S) |
| NAD ----- | NORTH AMERICAN DATUM |
| O.S.T. ----- | OPEN SPACE TRACT |
| P.B.C. ----- | PALM BEACH COUNTY |
| U.E. ----- | UTILITY EASEMENT |
| D.E. ----- | DRAINAGE EASEMENT |
| 7-43-41 ----- | SECTION-TOWNSHIP-RANGE |
| R ----- | RADIUS |
| L ----- | ARC LENGTH |
| D ----- | DELTA ANGLE |
| CB ----- | CHORD BEARING |
| C ----- | CHORD |
| N.T.I. ----- | NON-TANGENT INTERSECTION |
| N.T.C. ----- | NON-TANGENT CURVATURE |
| P.C. ----- | POINT OF CURVATURE |
| P.T. ----- | POINT OF TANGENCY |
| R.C. ----- | REVERSE CURVATURE |
| R/W ----- | RIGHT-OF-WAY |
| ⊕ ----- | CENTERLINE |
| (TYP.) ----- | TYPICAL |
| C.C.R. ----- | CERTIFIED CORNER RECORD |
| LB ----- | LICENSE BUSINESS |
| S.I.D. ----- | SEMINOLE IMPROVEMENT DISTRICT |
| PRM ----- | PERMANENT REFERENCE MONUMENT |
| ● ----- | PERMANENT CONTROL POINT |
| □ ----- | FOUND PERMANENT REFERENCE MONUMENT |
| ◻ ----- | 4"x4" CONCRETE MONUMENT WITH 2" ALUMINUM DISK STAMPED "PRM LB 7768" (UNLESS OTHERWISE NOTED) |
| • ----- | SET 1/2" IRON ROD AND CAP STAMPED "PRM LB []" |

THIS INSTRUMENT PREPARED BY
 GARY A. RAGER, P.S.M.
 LS4828 STATE OF FLORIDA.
 GEOPOINT SURVEYING, INC.
 4152 WEST BLUE HERON BOULEVARD, SUITE 106,
 RIVIERA BEACH, FLORIDA 33404.
 CERTIFICATE OF AUTHORIZATION NO. LB7768

GeoPoint
 Surveying, Inc.

4152 W. Blue Heron Blvd.
 Suite 106
 Riviera Beach, FL 33404

Phone: (561) 444-2720
 www.geoointsurvey.com
 Licensed Business Number LB 7768

Sheet No. 4 of 4 Sheets